

1. Scope

This specification covers the requirements for manufacturing and supplying precast reinforced concrete vault risers having the dimensions and features specified herein. The risers shall fit between the base and cover of Oldcastle Precast's reinforced concrete vaults as specified below.

4'W x 4'L (444-LA)
4'8"W x 4'8"L (504-LA)
4'W x 6'L (644-LA)
4'8"W x 7'L (575-LA)
6'8"W x 12'8"L (612-LA)
5'W x 9'L (4484-LA)

2. Material ID Numbers

The following concrete risers are covered by this specification. These risers shall have the dimensions and features indicated in the corresponding drawings shown in Figures 5.1 - 5.8.

| Material ID | Description | Approximate Weight (lbs) | Compatible with Oldcastle Precast Vault Part No. | Figure |
|-------------|--|--------------------------|--|--------|
| 780719 | 4'W x 4'L x 6"H Riser w/ 4, 3/4" Threaded Inserts | 390 | 444-LA | 5.1 |
| 780777 | 4'W x 4'L x 12"H Riser w/ 4, 3/4" Threaded Inserts | 870 | 444-LA | 5.2 |
| 780727 | 4'8"W x 4'8"L x 6"H Riser w/ 4, 3/4" Threaded Inserts | 460 | 504-LA | 5.3 |
| 780785 | 4'8"W x 4'8"L x 12"H Riser w/ 4, 3/4" Threaded Inserts | 920 | 504-LA | 5.4 |
| 5000634 | 4'W x 6'L x 6"H Riser w/ 4, 3/4" Cable Lift Loops | 560 | 644-LA | 5.5 |
| 5000635 | 4'8"W x 7'L x 6"H Riser w/ 4, 3/4" Cable Lift Loops | 740 | 575-LA | 5.6 |
| 5001391 | 6'8"W x 12'8"L x 12"H Riser w/ 4, 2-Ton Lift Anchors | 3,870 | 612-LA | 5.7 |
| 5001530 | 5'W x 9'L x 12" H Riser w/ 4, 2-Ton Lift Anchors | 2,420 | 4484-LA | 5.8 |

3. Reference Standards

All materials used in the manufacture of the concrete risers specified herein shall adhere to the specifications of District Material Standard VAULTMAT1.

4. Lifting Inserts

Risers shall be equipped with lifting means as outlined in the descriptions of Section 2. Risers with threaded inserts shall have 3/4 inch-10 threaded lifting insert manufactured of corrosion-resistant stainless steel. Each threaded insert shall be equipped with a removable threaded plastic protective cap installed flush with the riser's top surface.

5. Configurations

Vault risers shall be configured and shall have the dimensions and features illustrated in Figures 5.1 - 5.8 as follows:

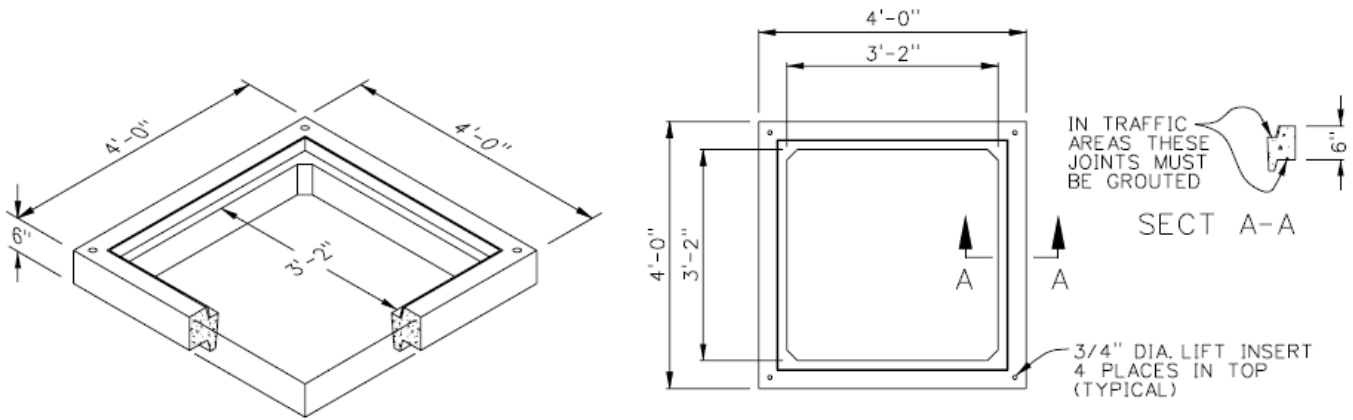


Figure 5.1
MID 780719
(4'W x 4'L x 6"H Riser)

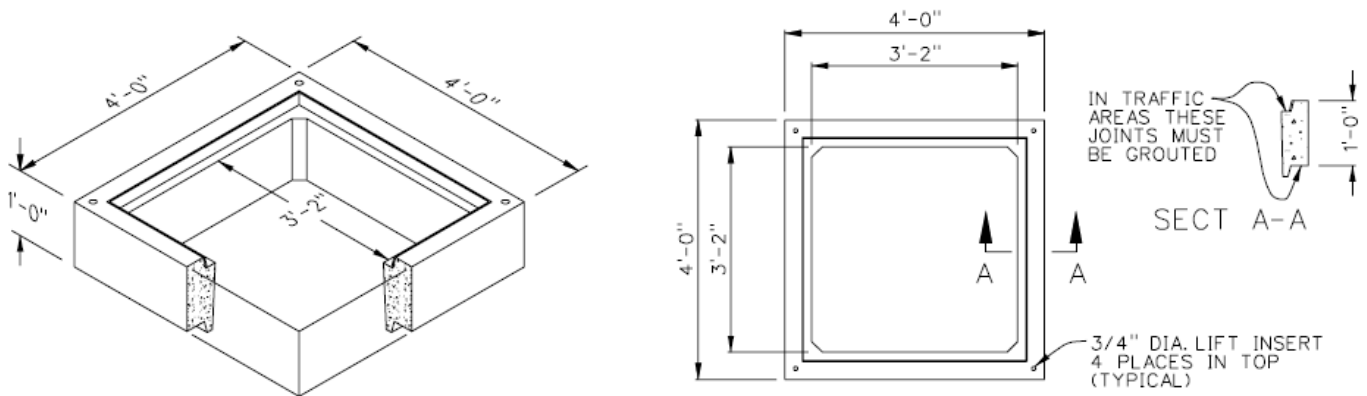


Figure 5.2
MID 780777
(4'W x 4'L x 12"H Riser)

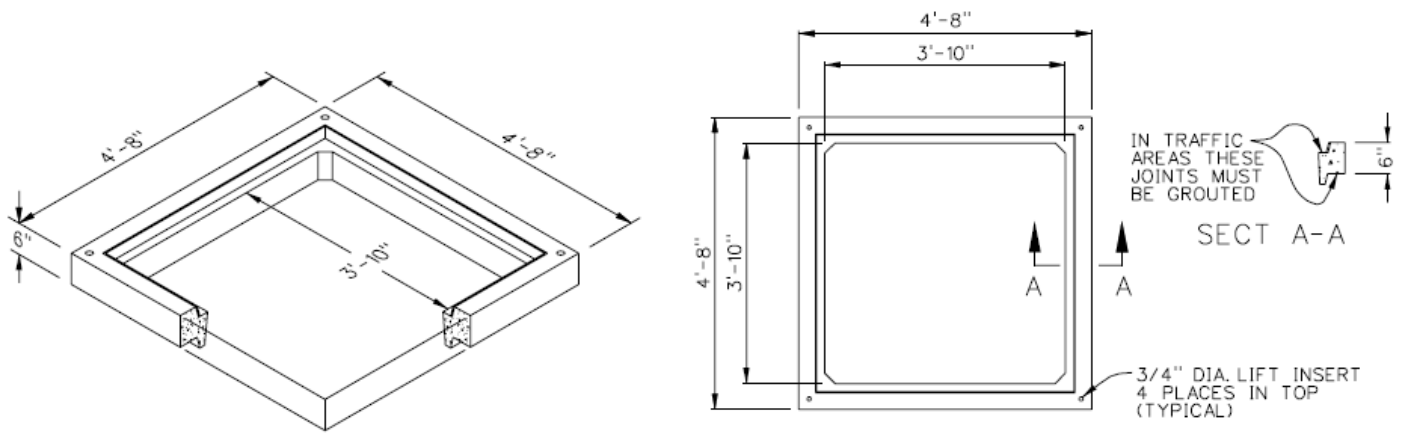


Figure 5.3
MID 780727
(4'8"W x 4'8"L x 6"H Riser)

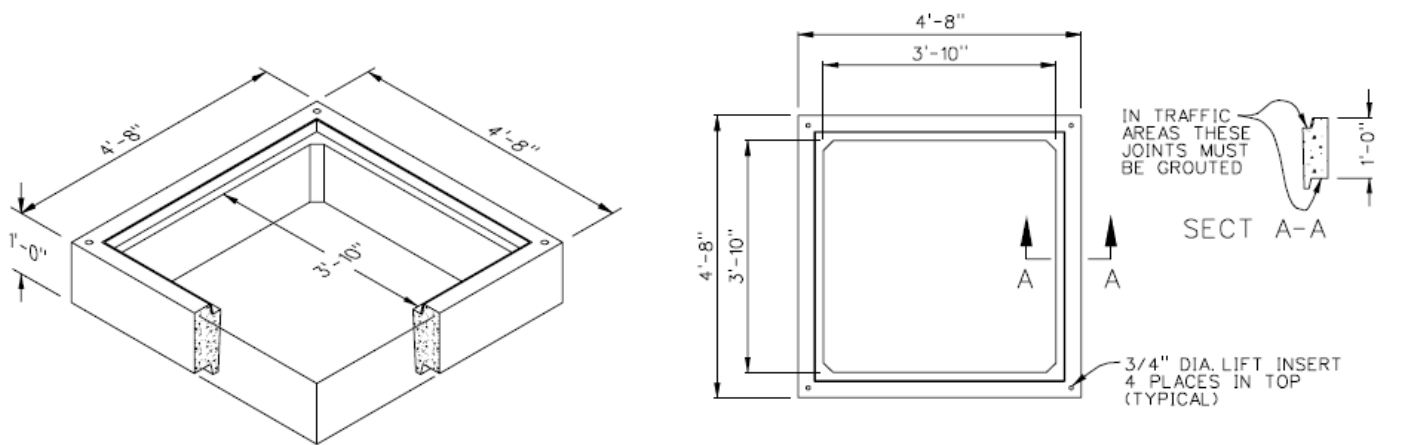


Figure 5.4
MID 780785
(4'8"W x 4'8"L x 12"H Riser)

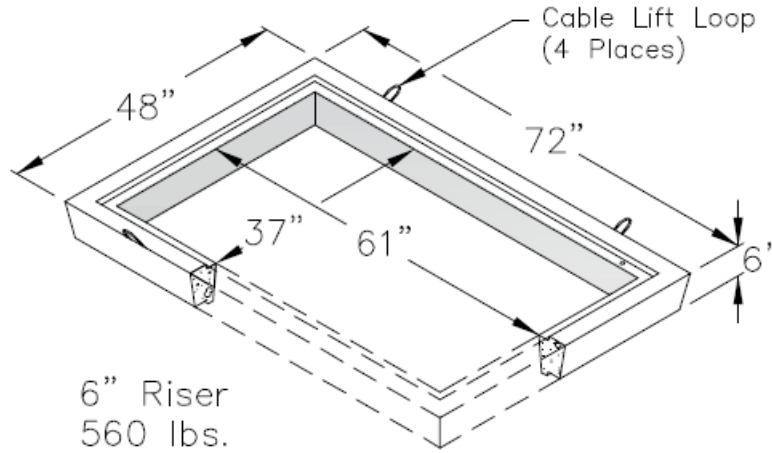


Figure 5.5
MID 5000634
(4'W x 6'L x 6"H Riser)

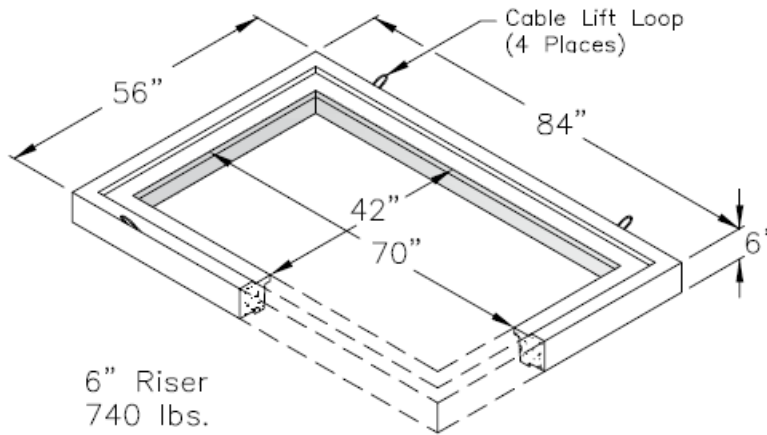


Figure 5.6
MID 5000635
(4'8"W x 7'L x 6"H Riser)

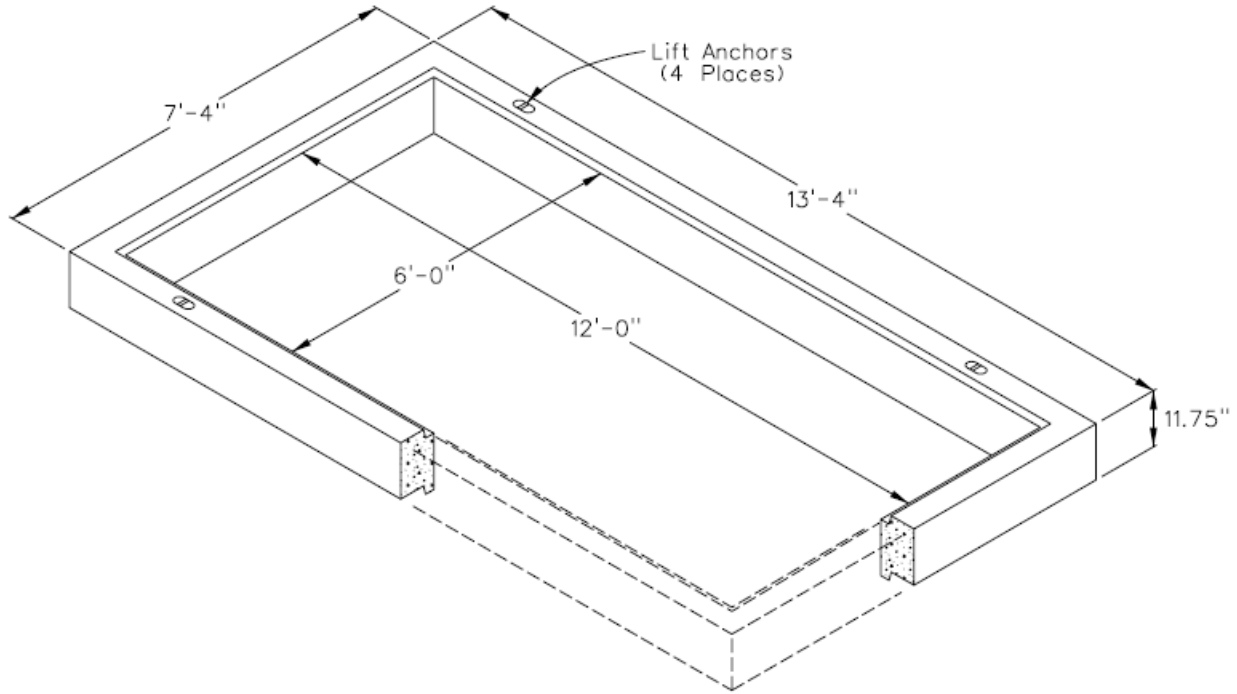


Figure 5.7
MID 5001391
(6'8"W x 12'8"L x 12"H Riser)